

RESIDUAL GRAVITY MAP

LEGEND

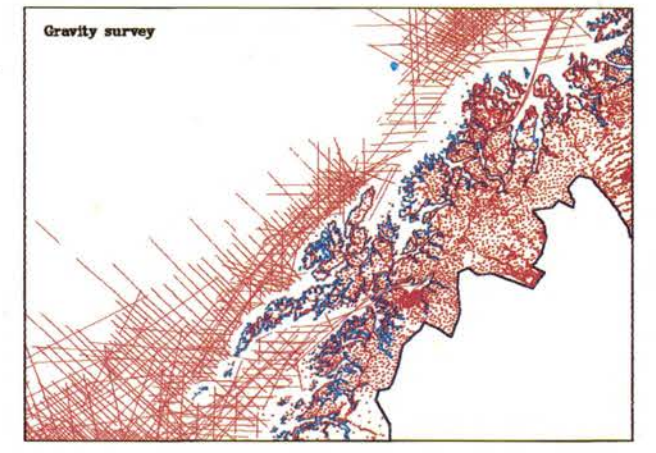
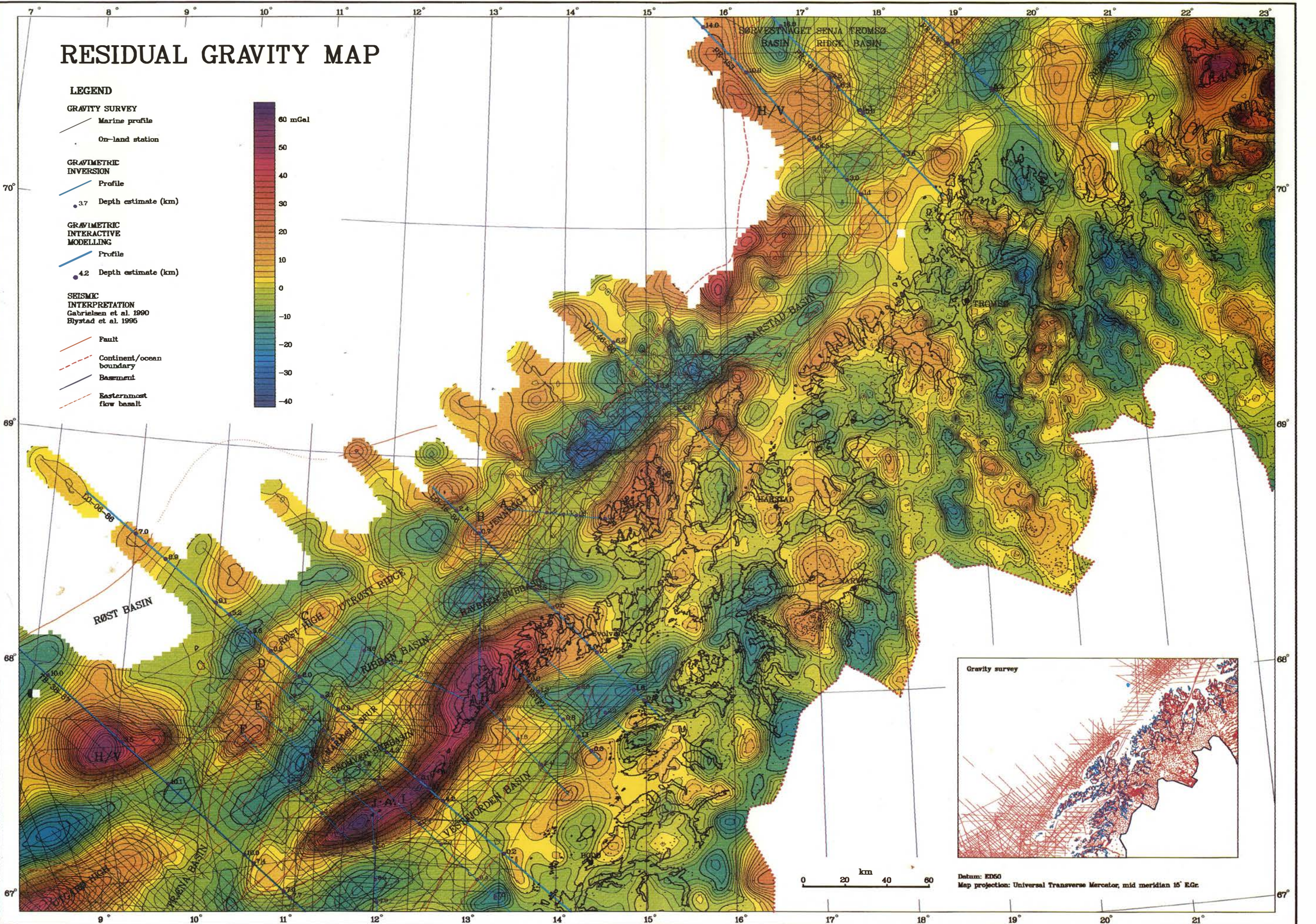
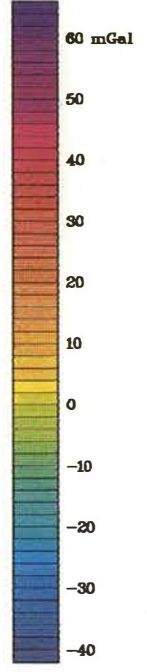
GRAVITY SURVEY
 Marine profile
 On-land station

GRAVIMETRIC INVERSION
 Profile
 3.7 Depth estimate (km)

GRAVIMETRIC INTERACTIVE MODELLING
 Profile
 4.2 Depth estimate (km)

SEISMIC INTERPRETATION
 Gabrielsen et al. 1990
 Blystad et al. 1996

Fault
 Continent/ocean boundary
 Basement
 Easternmost flow basalt



Datum: ED50
 Map projection: Universal Transverse Mercator, mid meridian 15° EGr.

Fig. 3. Residual gravity anomaly map obtained by subtraction of a 50-km-radius median filtered regional field from the Bouguer gravity field. H/V - basement high or volcanic centre.