

Fig. 4.

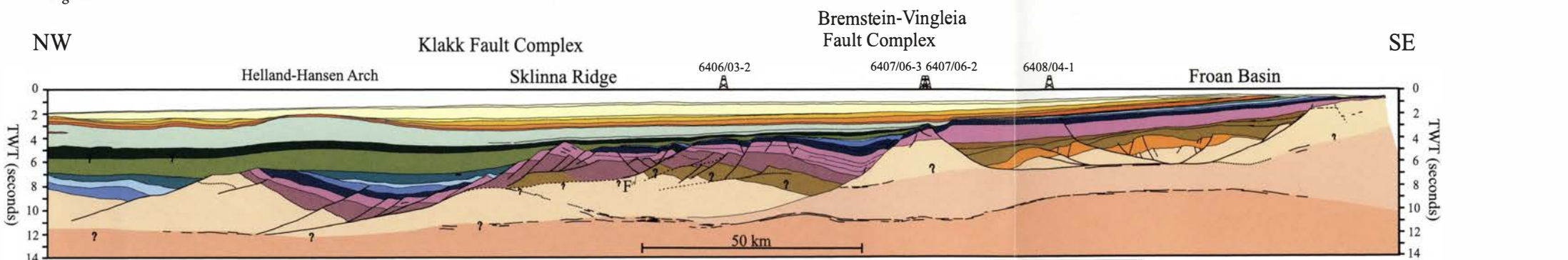


Fig. 5.

Fig. 3

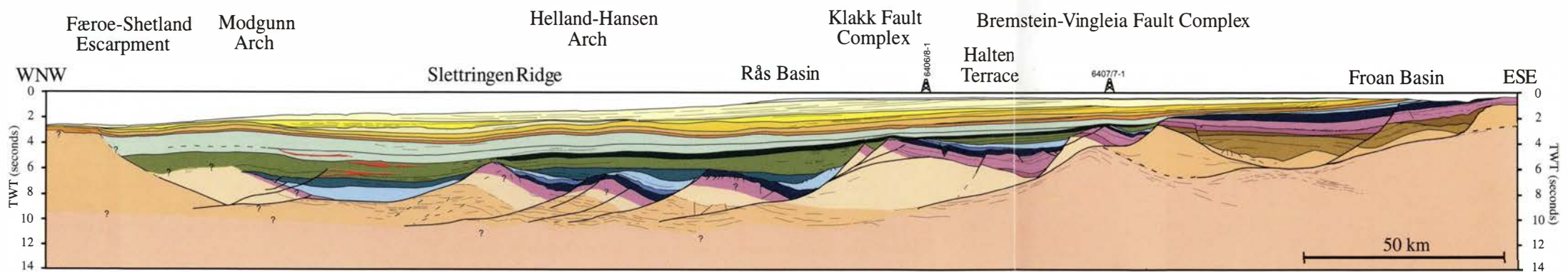


Fig. 6.

Fig. 12

Fig. 8

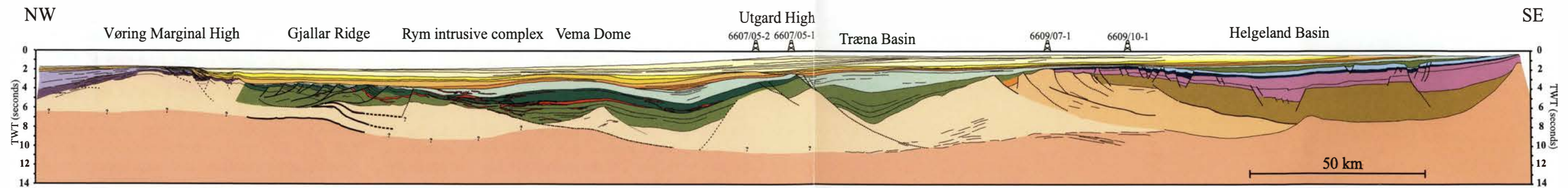


Fig. 7.

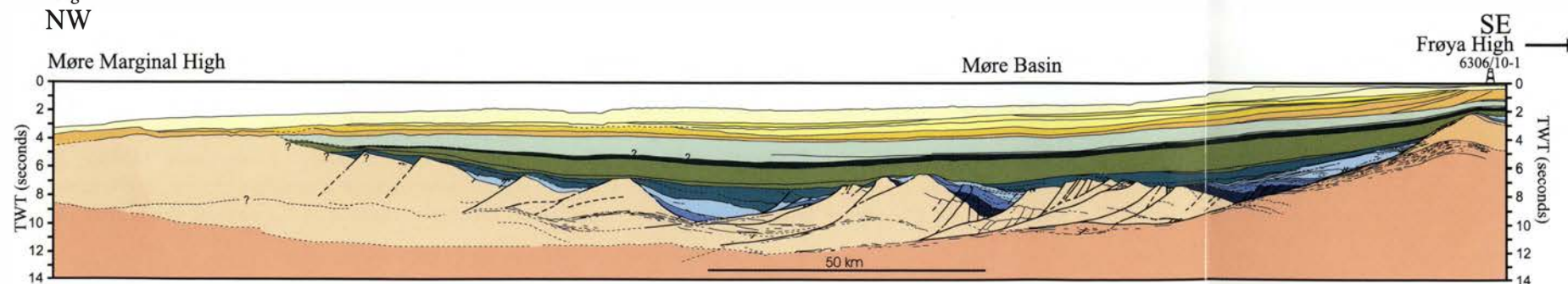


Fig. 9.

Fig. 11

Legend

- Deep crust and upper mantle
- Reflective basement
- Poorly reflective seismic units; may include basement, Palaeozoic and/or Early Mesozoic sedimentary rocks
- Mid-Late Palaeozoic? Caledonian nappes?
- Mid-Late Palaeozoic - Early Mesozoic

- Early Triassic?
- Mid- Late Triassic
- Early Jurassic (*Båt Gp.*)
- Middle Jurassic (*Fangst Gp.*)
- Late Jurassic (*Viking Gp.*)
(Subdivision of Jurassic tentative in deep basin areas)

- Early Cretaceous
- Early Cretaceous (*Cromer Knoll Gp.*)
- Early Cretaceous, Turonian (*Cromer Knoll Gp.*)
- Late Cretaceous (*Shetland Gp.*)

- Palaeocene - Lower Eocene (*Rogaland Gp.*)
- Eocene (*Hordaland Gp.*)
- Late Eocene - Early/Middle Miocene (*Hordaland Gp. - Nordland Gp.*)
- Intra Miocene
- Late Miocene - Early/Middle Pliocene
- Late Pliocene